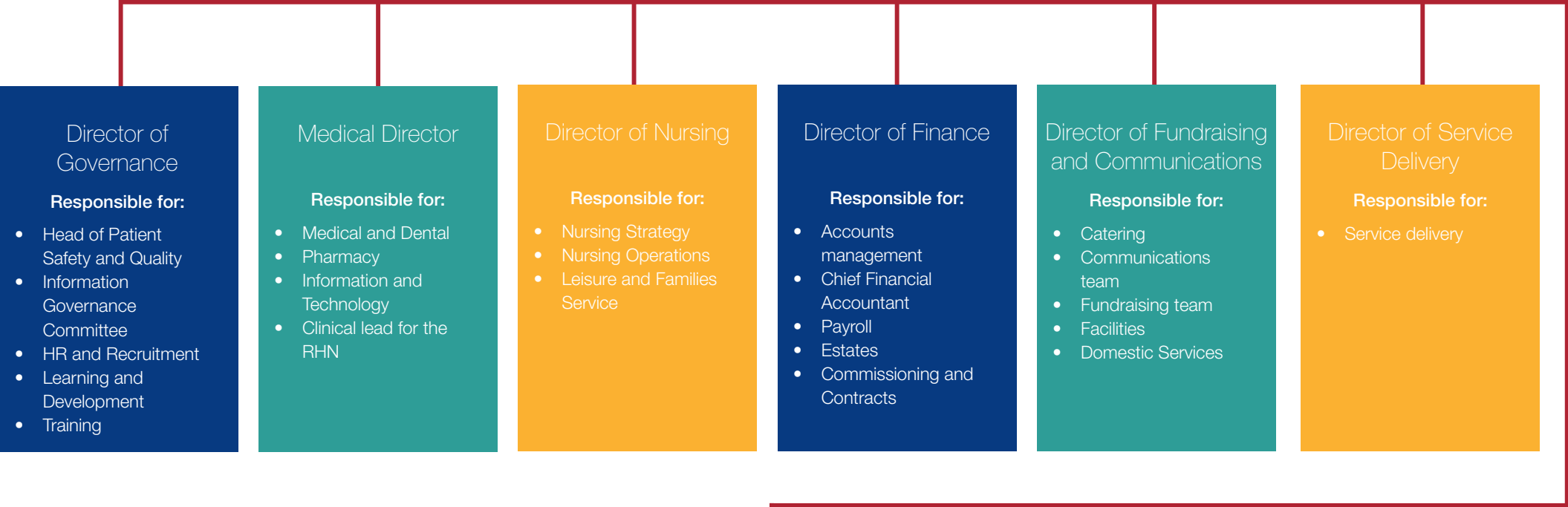


Trustees
Chair: Des Benjamin

Chief Executive
Paul Allen



Director of Governance

Responsible for:

- Head of Patient Safety and Quality
- Information Governance Committee
- HR and Recruitment
- Learning and Development
- Training

Medical Director

Responsible for:

- Medical and Dental
- Pharmacy
- Information and Technology
- Clinical lead for the RHN

Director of Nursing

Responsible for:

- Nursing Strategy
- Nursing Operations
- Leisure and Families Service

Director of Finance

Responsible for:

- Accounts management
- Chief Financial Accountant
- Payroll
- Estates
- Commissioning and Contracts

Director of Fundraising and Communications

Responsible for:

- Catering
- Communications team
- Fundraising team
- Facilities
- Domestic Services

Director of Service Delivery

Responsible for:

- Service delivery

Associate Director of Research

Responsible for:

- Research team