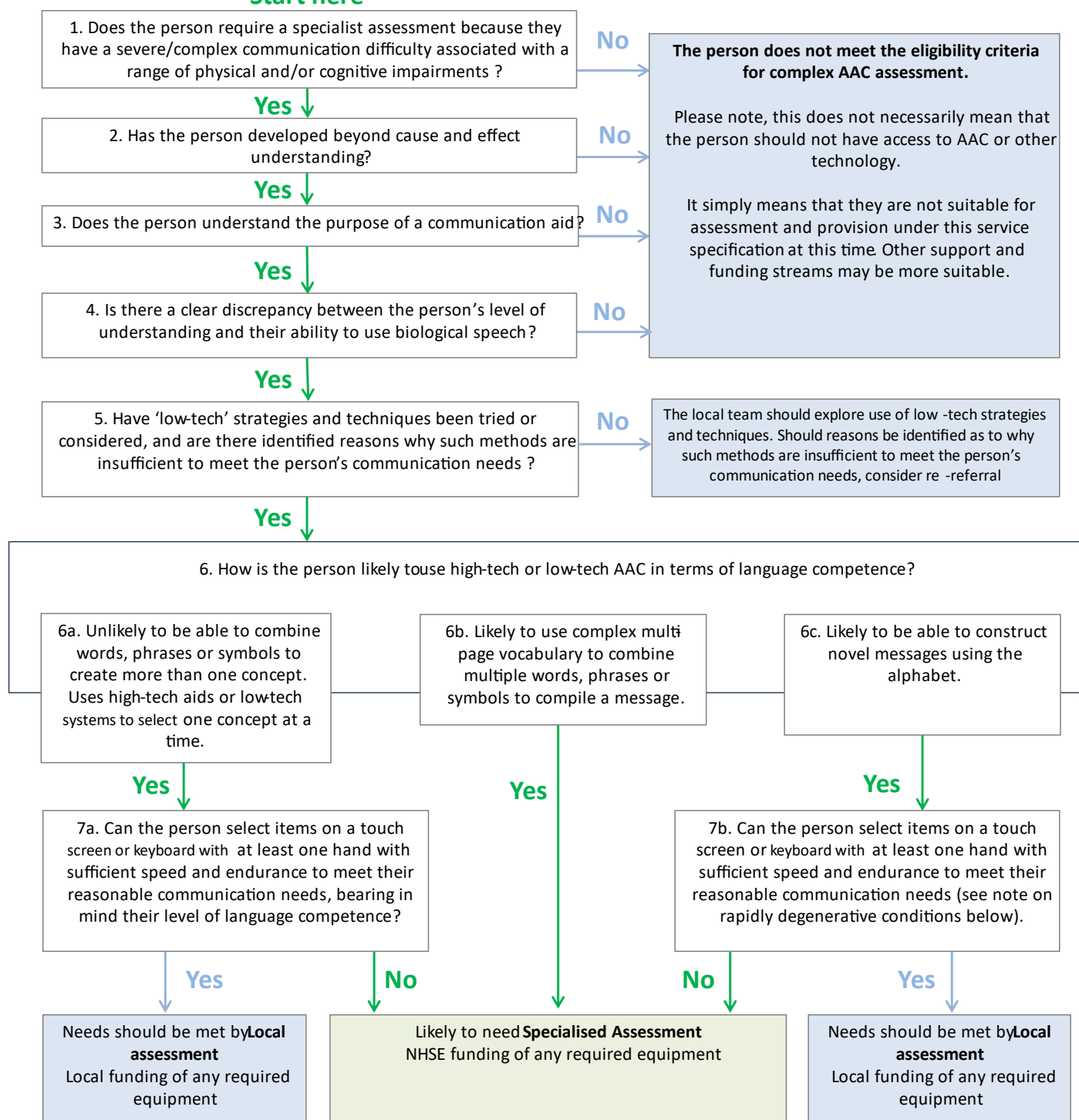


## Decision chart: Guidance on referral criteria for Specialised AAC Services

**Start here**



NOTE: People with rapidly degenerative conditions can be referred before they meet all the criteria, particularly in terms of speech and hand function (boxes 4 and 7). The referrer and specialised AAC service team should be satisfied that they are deteriorating at a rate meaning that they are likely to meet the criteria within the time a communication aid would be provided. Although this time varies a period of 18 weeks is suggested. It is recognised that this is a difficult determination to make, but evidence of how a person has deteriorated in the previous 18 weeks, prior to the referral will be useful. Decisions will be made on individual clinical circumstances.